

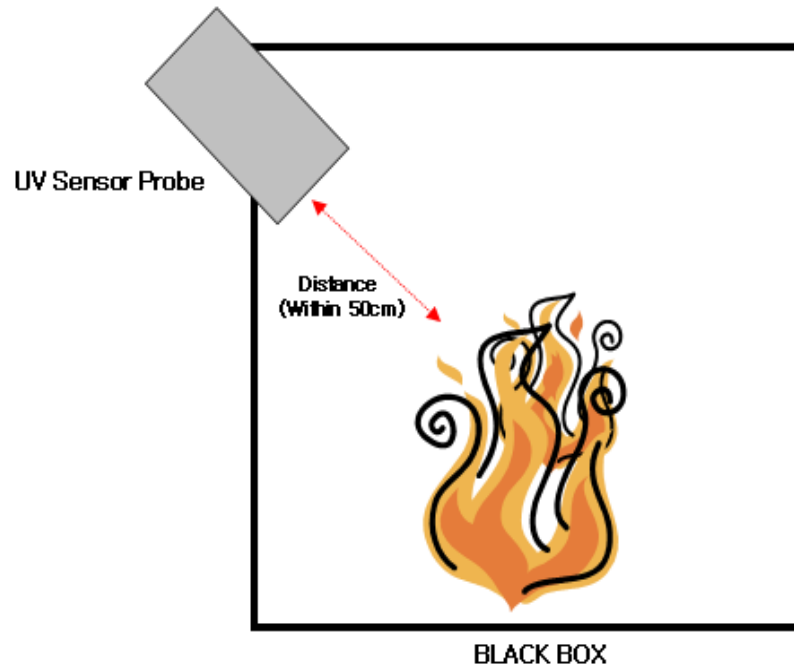
FAQ

Subject : Inquiry of Flame(spark) sensing Probes.

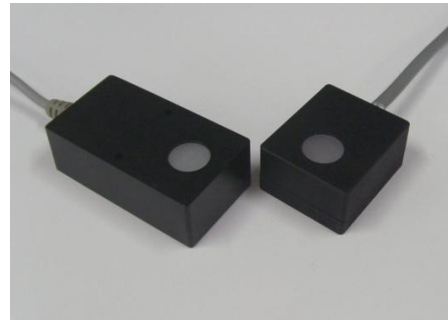
Date : 2016. 04. 25.

Genicom's Sensor Probes are difficult to detecting Flame more than 0.5 meters.

Genicom's flame detector is available establishing in box that visible light cut-off.



* establishing in a box that visible light is cut-off.



GUVx-T1xGC-2LA2-L, GUVx-T1xGC-2LA5-L



GUVx-T13GC-3LW10-L, GUVx-T13GC-I8LW10-L

Product name	Vcc	Anguler response	Feature	Output	Detection Range
GUVx-T1xGC-2LA2-L	9~26 VDC	60°	General	0 ~5 VDC	UV
GUVx-T1xGC-2LA5-L	9~26 VDC	60°	Separated Connector	0 ~5 VDC	220~280nm
GUVx-T1xGC-3LW10-L	9~26 VDC	30°	Waterproof	0 ~5 VDC	UV
GUVx-T13GC-I8LW10-L	9~26 VDC	30°	Waterproof	4~20 mA	220~280nm