

FAQ

<Example>

1. Gain change point in board: C6
2. Expected to mount 3.6MΩ

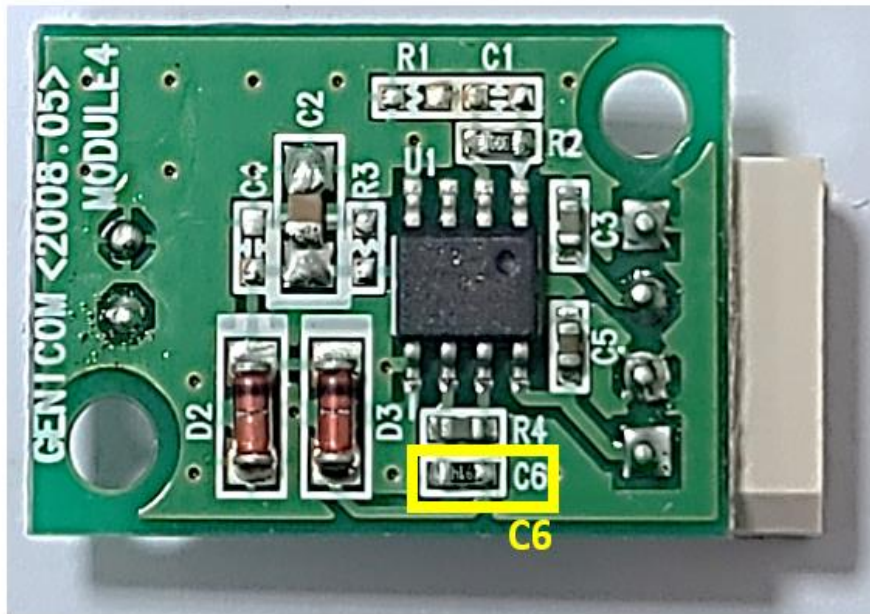


fig1. GUVx-T1XGM-LA

<Example>

C6	Relative Gain
360kΩ	x 0.1
3.6MΩ	x 1
36MΩ	x 10

Resistor Size : 1608

table1. Gain change table

*** When changing the gain, the calibration setting value is changed.**